



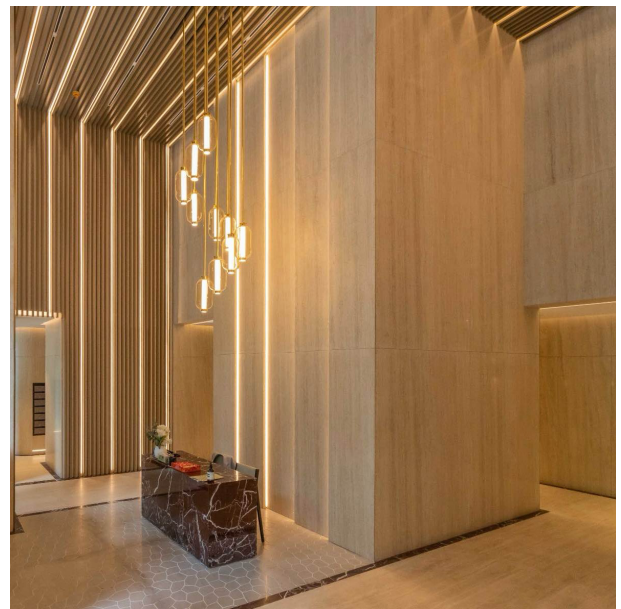
# TLI-WL10887

## BAI FAMILY PENDANT LIGHT

### TECHNICAL

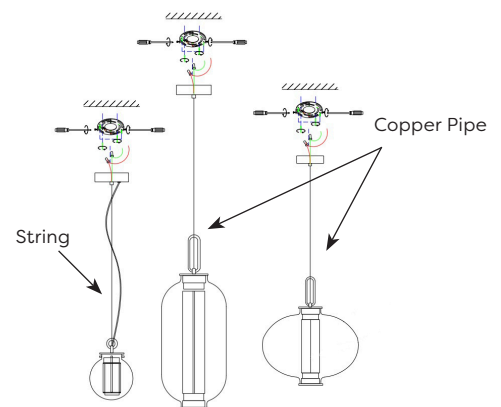
Materials of Optics	Glass
Materials of Housing	Steel
Light Source	LED bulb E27
Color Temperature	3000k
Luminous Efficiency@4000K	75lm/W
CRI	≥80
Lifetime(hr)	50,000h
Product Finishing	Gold

### FEATURES & BENEFITS



### INSTALLATION & ACCESSORIES

String or copper pipe can be ordered



WL10887-1    WL10887-2    WL10887-3    WL10887-4    WL10887-5

### DATA SHEET

CODE	INPUT VOLTAGE	DIMENSIONS	CONNECT BY
TLI-WL10887-1	AC100-240V	Ø180x250	String or Copper Pipe
TLI-WL10887-2	AC100-240V	Ø250x320	String or Copper Pipe
TLI-WL10887-3	AC100-240V	Ø220x610	String or Copper Pipe
TLI-WL10887-4	AC100-240V	Ø270x850	String or Copper Pipe
TLI-WL10887-5	AC100-240V	Ø400x500	String or Copper Pipe